



# Annual Governors Report to Parents



## Message from the Headteacher

It is a privilege to present the Federation's annual report for 2023 – 2024 presenting our activity, successes and vision in the further development of the Federation.

I would like to start by thanking you for all your support over the past year. We are extremely fortunate to have such special children here as pupils at both schools. So I trust that they are happy, and are developing educationally, emotionally and socially. Our vision here at the school is "Happy and Successful Children".

Our focus is to ensure the highest quality experiences and education for our pupils. It is pleasing to observe the pupils learning - there is excitement in our classes, the pupils' discussions are interesting and increasingly informed and their pride in being bilingual learners is very prominent in school.

We are in an incredibly exciting time for education as we develop an exciting, up-to-date and successful curriculum and pedagogy within the Federation. The last few years have been years where the school has experimented with different pedagogy models and I am delighted to see our vision in action within the Federation. Learning is exciting within the Federation!

I would like to thank the Governing Body for their voluntary commitment to the school. They all play a vital role in challenging, questioning and coming up with ideas to ensure the best for our children. I appreciate the help and support of parents, villagers and governors as we continue to develop and improve our provision. Our door is always open for you as parents and remember to get in touch if there is anything you would like to discuss, if you have any concern or celebration you would like to share. Happy children learn and ensuring that pupils at Ysgol Dyffryn Dulas and Ysgol Pennal are happy is key to my vision for the school.

At Ysgol Dyffryn Dulas and Ysgol Pennal, the pupils are good friends who show Courtesy and Respect. In both schools, we nurture the citizens of the future, create leaders who want to change the world and encourage our pupils to follow their dreams and become lifelong learners!

I look forward this year to continue the activity of previous years and to further develop the Federation! We have a strong vision and it will be a privilege to lead this vision jointly with the pupils, staff, Governors and you as parents!.

Mrs Nia Wyn Thomas-Evans  
Headteacher





## Message from Chairperson

Dear Parents,

It is a privilege and honour for me once again this year as Chair of the Board of Governors to present the Ysgol Dyffryn Dulas, Corris and Ysgol Pennal Federation's Annual Report 2023-2024. This is an opportunity for you to have a look at the day-to-day work of the Federation, its statistics and achievements over the past year.

Firstly it is my pleasure to sincerely thank the Board of Governors for their tireless support, always ready to roll up their sleeves to ensure the success of the Federation over the past year. There have been quite challenging times but the Board is there to support the Headteacher and staff.

This is also an opportunity to thank the Headteacher Mrs Nia Thomas-Evans and all staff at the Federation for their unfailing dedication. Mrs Nia Thomas-Evans' leadership is strong and firm, and shows respect to all staff.

I would like to thank the Friends of the School for their tireless dedication to assisting the Federation in a variety of ways. Parents must also be thanked for their strong support together with both communities for their dedication to ensure the success of the Federation.

As Chair I am extremely proud of the Ysgol Dyffryn Dulas, Corris and Ysgol Pennal Federation, where all pupils are supported to achieve their full potential which will ensure their future and the future of their communities.

Our aim as a Federation is to ensure that the children are joyful and happy and given the support to reach their full potential.

Mr Dennis B Jones

Chairman of the Board of Governors



## Governing Body Membership (September 2023 – July 2024)

Name	Representing
Mr Dennis Jones - Cadeirydd	Cynrychiolydd Cymunedol Corris
Mrs Corina Owen-Davies – Is gadeirydd	Rhieni Pennal
Ms Nia Wyn Thomas - Evans	Pennaeth
Mrs Kayla Lockett	Staff dysgu Pennal
Mrs Eirlys Jones	Staff dysgu Corris
Mrs Janet Owen - Durham	Staff ategol Pennal
Mrs Elen Court	Staff ategol Corris
Mr Rhys Parry	Cyngor Cymuned Pennal
Mrs Ann Roberts	Cynrychiolydd Cymunedol Pennal
Mrs Sharon Wells	Cyngor Cymuned Corris
Mrs Mirain Breese	Rhieni Pennal
Mr Matt Ward	Rhieni Corris
Mr Nick Young	Rhieni Corris
Cyng Dewi Owen	AALI Pennal
Cyng John Pugh Roberts	AALI Corris
Mrs Eirian Jones - Clerc	

The Clerk to the Governing Body is Mrs Eirian Jones. Mrs Jones can be contacted via the school.

The Chair of the Governing Body can be contacted by sending a note addressed to him via the Governing Body Clerk.

The Body reflects a cross-section of our local community, and a new Chair is elected at the beginning of every academic year. The main aim of the body is to ensure that all children here at the Federation of Ysgol Dyffryn Dulas and Ysgol Pennal are challenged to achieve their full potential by fulfilling the Local Education Authority's policies and legislation set by the Welsh Government. The Governors meet at least once every term, and during the meetings, all school Staff are given an opportunity to present information about pupils' progress and attendance, curricular developments, staffing matters etc. The role of the Governors is to enquire and challenge staff regarding plans, activities and their impact. Being a member of the Governors is voluntary, therefore we thank the Body for their time and commitment to the school.

When a parent representative's time as member of the Body comes to an end, an election is held for parents. You will receive full information about this process the next time we need to elect a parent.

### Contacting the Governors

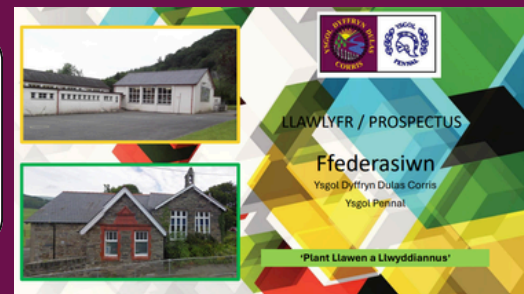
We welcome your correspondence with the Governors at every occasion; you can contact with any enquiry or comment that you would like to ask/share with the Governing Body. Correspondence with the Chair and the Body is received through the clerk, Mrs Eirian Jones.

It is not usual now to hold an annual meeting with parents, unless you wish for a meeting to be held. It is possible to hold up to three meetings a year with parents after petitioning. To hold a meeting, a minimum of 10% of registered pupils' parents must sign the petition, noting why they wish for a meeting. The requested meeting has to be held for the purpose of discussing a school-related matter.



# Federation Handbook and Prospectus

There is a brand new handbook for the Federation and all parents have received a digital copy. A hard copy is available from the Headteacher.



## Policies

Likewise, every policy was discussed, adapted and updated. All school policies are reviewed either annually or as part of a three-year cycle and are available at the school.

## Health and Wellbeing

As well as undertaking the Physical Education statutory curriculum, the children of the Federation will compete in a comprehensive programme of athletics and sports against children from schools in the catchment area and beyond. The school focuses on aspects of health and well-being within the thematic work of the class and incorporates outdoor areas into daily learning experiences.



## Wellbeing

Well-being has been a priority for the school in recent years. We continue to work closely with the authority's Welfare Officer to support pupils and families.

The school has a policy of fruit only as playtime snacks. We grow fruits and vegetables. Kitchen contractors have designed their menu specifically to meet the requirements of the Welsh Government's Appetite for Life. A healthy menu is promoted at lunchtime. For drinking, only water is allowed. Within the Federation, we take pride in being a part of the Wales Healthy Schools Network.

Pupils enjoy running around the track to have a little break from the classroom!

Yoga sessions are also held in all classes.

Years 2-6 receive swimming lessons in the Spring Term each year.

Eginiad Cymru workshops are held in the Autumn Term for pupils in the 7-11 years Classes.



**HAPPY AND SUCCESSFUL CHILDREN**



Ffederasiwn Ysgol Dyffryn Dulas ac Ysgol Pennal  
"Plant Llawn a Llwyddiannus"



## Class Organisation

### Ysgol Dyffryn Dulas

Nursery – Year 2 Mrs Nia Rowlands

Year 3 – 6 Mrs Eirlys Wyn Jones

### Ysgol Pennal

Nursery – Year 2 Mrs Kayla Lockett

Year 3 – 6 Mrs Miriam Jones

## Order of the day

You are welcome to visit the school at any time, but you must make a prior appointment with the Headteacher to ensure enough time to discuss. We all collaborate for the well-being of every child in the school.

The children are expected to arrive at the school after 8.50 in the morning, to be ready for class at 9.00. Supervision is from 8.50 onwards, and we are not responsible for the pupils before this unless they attend the Breakfast Club. If you are likely to be late to pick up your children at the end of the day, then please make every effort to inform us to be able to alleviate the child's worries.

## Language

Ensure, through purposeful and sensitive nursery provision and organisation, that all children are given a firm grounding in Welsh to enable them to reach the goal of full bilingualism in due course.

### 3-7 years class

Build on the foundations laid for the Welsh language through nursery education. Strengthen and develop the mother tongue of Welsh learners and, in the case of children from Welsh-speaking homes, extend their grasp of English.

### 7-11 years class

Strengthen and develop each child's Welsh and English in all their passive and active aspects, in order to ensure that they can speak, read and write fluently and confidently in both languages when they transfer to secondary school. Special provision is made for latecomers.

## The Gwynedd Primary Schools Welsh Language Charter

The Federation is fully committed to the Gwynedd Primary Schools Welsh Language Charter. The Gwynedd Primary Schools Welsh Language Charter derives from the detailed work of the Working Group for Influencing Social Use of the Welsh Language amongst Children. Its primary function is to ensure that the Welsh language, and its social use by our children and young people, flourishes. The seven aims of the Charter are used as instruments to measure progress in the use of the language together with the success of our schools' plans.



## Exclusions

There were no exclusions during the year.

A copy of the Authority's arrangements for excluding pupils is available at the school.

## Toilet facilities and cleaning arrangements

The school has a suitable number of toilets for the pupils enrolled. The toilets are inspected during the day, and are cleaned daily by the Authority's cleaning service.



## Learning and Teaching

During the year, both schools continued their implementation of the Curriculum for Wales for pupils aged 3-11. In line with the expectations for all schools in Wales, further steps were taken to develop the Curriculum for Wales by developing the four purposes of the curriculum. Pupils were given more opportunities to make decisions regarding their own learning.

The working relationship is commendable here at the Federation. During the year, a number of workshops were held including Mr Robin Williams (STEM), Elin Crowley (a lampshade creating artist), and Caru Celf in the Summer Term making Olympic-themed artwork and drama.

In addition, all staff attended a number of various courses on curriculum developments during the year.

Through our recognition of each child's needs, our aim here within the Federation is to respond proactively to ensure that each individual pupil reaches their full potential, whatever their ability, and grow into independent learners who are valued members of our community.



## Additional Learning Needs

Mrs Kayla Lockett is the ALN Co-ordinator at Ysgol Pennal, and Mrs Eirlys Wyn Jones is the ALN Co-ordinator at Ysgol Dyffryn Dulas.

Mrs A O Roberts is the ALN designated Governor.

The aim of the school is to identify children with additional learning and inclusion (ALN&I) needs early, and give purposeful attention to pupils who are on the register. Our hope is to offer the best provision by collaborating with the home and ensuring that each individual reaches their full potential. In the school, this is done by providing additional support within the classroom, or in small groups/individually through targeting and intervention plans. Specialist support is also given from the authority where appropriate. To this end, the policy is followed in every case. Individual Development Plans are prepared and reviewed by the parents/guardians, including the voice of the child. Every child on the register has made progress last year. Parents are consulted and invited to attend meetings with the ALN Coordinator and support services, including a statutory annual review. The ALN Provision Map sets out the provision the school offers to pupils of the Federation.



# School Development Plan 2023-2024

The school has a Development Plan, and this is a working document which identifies and addresses our priorities deriving from our self-evaluation procedures. The development plan considers local and national priorities, as well as developing our findings after monitoring and scrutinising the children's work. Our targets will be evaluated and adapted regularly to ensure that they are appropriate to achieve our aim. Members of the Governing Body are responsible for monitoring the self-evaluation plan. During meetings, they will report, enquire and challenge the development of the school in accordance with the Development Plan to ensure that the priorities are implemented effectively.

## The top 4 priorities for 2023 – 2024 were:

PRIORITY 1 - Expanding opportunities for pupils to practice and apply their cross-curricular and holistic skills within authentic learning experiences

PRIORITY 2 - Further develop outdoor learning to target a range of skills in a holistic approach

PRIORITY 3 - Continue to experiment with pupil progress monitoring procedures and further refine some specific strategies of formative assessment





# Attendance

## Attendance 2023-2024 :

Ysgol Dyffryn Dulas 93.9%

Ysgol Pennal 93.4%

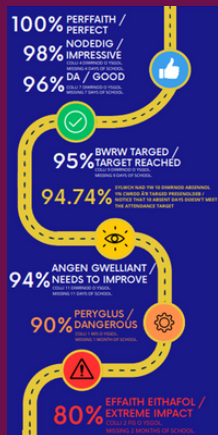
## Attendance 2022-2023:

Ysgol Dyffryn Dulas 89.9%

Ysgol Pennal 93.8%

School Attendance Target 2023-2024 : 95%+

Although the unauthorised absences percentage is low, we will continue to monitor each case individually to solve the problem. We also pay close attention to punctuality, and collaborate with families to improve and solve any problem.



Ffederasiwn Ysgol Dyffryn Dulas ac Ysgol Pennal  
“Plant Llawn a Llwyddiannus”



## Community

We are very fortunate to work closely with a number of organisations in the local community and are involved in a number of activities and partnerships that have been established for several years. We are extremely fortunate of the school's location, and the natural beauty of the local area which is also full of history. We make the most of the area to enrich the children's outdoor experiences. Through these connections with different community members, we nurture the children to become ethical and informed citizens, as well as develop the school's community and civic role. We are very fortunate to be working closely with PC Sion who visits us regularly to chat and give presentations to pupils to support our Health and Well-being curriculum.



We have a very close relationship with Ysgol Uwchradd Tywyn ac Ysgol Bro Hyddgen, and ensure transition opportunities for years 5 and 6 before they move up to the secondary school. In doing so, this makes the change easier for them to leave the primary before beginning the next step of their education. As well as being valuable citizens of the village, we encourage all pupils to become worldwide citizens who are proud of their Welshness.

During May, Years 4 – 6 pupils had the opportunity to visit Glan-llyn. Two fun days were held taking part in a variety of outdoor activities. Although everyone was extremely tired, they were two very rewarding days.

Several pupils also succeeded at the Urdd Eisteddfod 2024 which included James, Cali and Wren. Many of the school competed as part of individual and collective competitions, and we look forward to competing once again this year.

Ffederasiwn Ysgol Dyffryn Dulas ac Ysgol Pennal  
“Plant Llawn a Llwyddiannus”



## Ysgol Pennal

- Pennal Church
- Pennal Partnership 2050
- Menter y Glan
- Pennal show
- Cneifio Cyflym Pennal



## Ysgol Dyffryn Dulas

- Cylch Meithrin Corris
- Corris Play Club
- Corris Football Club
- Corris show
- Corris railway
- Corris Craft Centre



## Links with the community and activities

Co-working across the catchment  
Macmillan coffee afternoons to raise money  
Monthly Open the Book services conducted by volunteers  
Public Thanksgiving Services  
Public Christingle services at Pennal Church  
Christmas Service at Pennal Church  
The Federation's Christmas Party  
Christmas dinner for pupils at the school  
Participate in the Christmas Fair Canolfan Pennal  
The termly visit of the mobile library  
The visits of the school nurse/hearing nurse/special needs specialists  
St. David's Day Concert  
Supporting Children in Need Day  
Transition days to Secondary for Year 6  
Area and County Eisteddfod: Singing, recitation, singing and recitation party and Arts and Crafts  
Urdd Athletics  
The Urdd Club was held for Yr 2 to 6 pupils

Corris Show at the school  
Competed at Pennal Show  
Road Safety Presentations  
Joint swimming/gymnastics lessons at the Leisure Centre in Machynlleth during the Spring term  
There were termly presentations from a member of the police, PC Sion  
School trip of ages 3-7 to the 'Gwlad y Rwla'  
Show at Theatr y Werin and a ride on the Rheidol narrow gauge railway  
School trip of ages 7-11 to Chester Zoo  
The annual Race the Train event at Corris  
Parents' evenings during the year.  
The Federation's Sports Day  
Competed in the Meirionnydd Sportshall event  
Gardening clubs led by volunteers  
Ysgol Pennal Summer BBQ  
STEM Workshops with Robin Williams  
Arts Workshops with Elin Crowley  
Dance and Art Workshops with Caru Celf  
Poetry workshops with Anni Llyn

## Friends of the School

During the year, various events were organised in both schools to raise money to buy new resources

- ipads
- reading books
- outdoor equipment
- woodwork equipment



Ffederasiwn Ysgol Dyffryn Dulas ac Ysgol Pennal  
"Plant Llawn a Llwyddiannus"



# Ysgol Dyffryn Dulas Financial Statement

2185 - Corris					
FINAL ACCOUNTS 2023/2024	Budget 2023/2024	Adjustments	Final Budget 2023/2024	Total Expenditure 2023/2024	Variance
<b>EMPLOYEES</b>					
Salary/Wages-					
Teachers	£174,807	£3,528	£178,335	£177,016	£1,319
Supply Teachers	£9,087	£0	£9,087	£10,888	-£1,801
Ancillary Staff - Lunchtime					
Lunchtime	£4,466	-£1	£4,465	£3,924	£541
Nursery Assistants	£28,141	£14,061	£42,202	£36,707	£5,495
Clerical Support	£5,004	£0	£5,004	£2,091	£2,913
Trainers/Supervisors/General	£0	£0	£0	£0	£0
Governors Clerk	£1,428	£0	£1,428	£689	£739
Caretaker (Overtime)	£700	£0	£700	£0	£700
<b>PREMISES</b>					
Repair & M'tce - historical responsibilities	£1,500	£0	£1,500	£986	£514
Repair & M'tce - property service	£3,825	£0	£3,825	£3,825	£0
SLA - Property Services	£1,583	£0	£1,583	£1,583	£0
Energy Costs -					
Electricity	£10,000	£0	£10,000	£10,562	-£562
Biomass	£8,000	£0	£8,000	£2,571	£5,429
Gas	£800	£1,200	£2,000	£497	£1,503
Water	£2,000	-£1,200	£800	£878	-£78
Carbon Management Scheme	£0	£0	£0	£0	£0
Cleaning Contract	£19,600	£0	£19,600	£19,380	£220
Caretaking Contract	£0	£0	£0	£0	£0
Ground Maintenance Contract	£2,118	£0	£2,118	£2,120	-£2
Cleaning Materials	£1,000	£0	£1,000	£205	£795
Fire Fighting Equipment	£100	£0	£100	£110	-£10
Rates	£4,120	£0	£4,120	£4,120	£0
<b>SUPPLIES &amp; SERVICES</b>					
Capitation	£7,700	£1,736	£9,436	£6,744	£2,692
Furniture	£65	£0	£65	£0	£65
Postages	£75	£0	£75	£0	£75
Telephone	£200	£0	£200	£55	£145
Area Office	£2,331	£1	£2,332	£2,332	£0
Financial Advice	£453	£0	£453	£453	£0
Banking, Payments, Receipts & Income	£150	£0	£150	£150	£0
SLA Salaries/Wages	£356	£0	£356	£356	£0
SLA Personnel & Salaries/Wages	£452	£0	£452	£452	£0
SLA Catering	£13,015	£0	£13,015	£13,015	£0
SLA Libraries	£60	£0	£60	£60	£0
SLA Archives	£493	£0	£493	£459	£34
Swimming Pools	£350	£0	£350	£1,756	-£1,406
Music Service	£1,700	£296	£1,996	£3,590	-£1,594
SLA - Technology Support	£1,009	£0	£1,009	£1,009	£0
Schools' Networking Services	£4,087	£0	£4,087	£4,087	£0
RESERVE	£0	£31,550	£31,550	£0	£31,550
<b>TOTAL EXPENDITURE</b>	<b>£310,777</b>	<b>£51,169</b>	<b>£361,946</b>	<b>£312,670</b>	<b>£49,276</b>
LETTINGS	£0	£0	£0	£0	£0
DONATIONS / OTHER INCOME	£0	-£1,736	-£1,736	-£1,736	£0
GWE INCOME	£0	-£12,675	-£12,675	-£12,675	£0
USE OF BALANCES	-£35,824	£35,824	£0	£0	£0
GRANTS	-£14,982	-£8,562	-£23,544	-£26,822	£3,278
INTEREST ON BALANCES	£0	£0	£0	-£2,542	£2,542
<b>TOTAL</b>	<b>£259,971</b>	<b>£64,020</b>	<b>£323,991</b>	<b>£268,895</b>	<b>£55,096</b>
<b>CARRYOVER TO FINANCIAL YEAR 2024/2025</b>					<b>£55,096</b>

# Ysgol Pennal Financial Statement

2207 - Pennal					
FINAL ACCOUNTS 2023/2024	Budget 2023/2024	Adjustments	Final Budget 2023/2024	Total Expenditure 2023/2024	Variance
<b>EMPLOYEES</b>					
Salary/Wages-					
Teachers	£155,522	£4,788	£160,310	£158,360	£1,950
Supply Teachers	£8,371	£625	£8,996	£12,559	-£3,563
Ancillary Staff - Lunchtime					
Lunchtime	£6,472	-£1	£6,471	£4,606	£1,865
Nursery Assistants	£15,778	£102	£15,880	£17,508	-£1,628
Clerical Support	£0	£0	£0	£0	£0
Trainers/Supervisors/General	£0	£0	£0	£0	£0
Governors Clerk	£1,428	£0	£1,428	£689	£739
Caretaker (Overtime)	£0	£0	£0	£0	£0
<b>PREMISES</b>					
Repair & M'tce - historical responsibilities	£800	£0	£800	£244	£556
Repair & M'tce - property service	£1,660	£0	£1,660	£1,660	£0
SLA - Property Services	£914	£0	£914	£914	£0
Energy Costs -					
Fuel Oil	£0	£0	£0	£0	£0
Electricity	£7,200	£0	£7,200	£5,922	£1,278
Gas	£2,000	£0	£2,000	£826	£1,174
Water	£1,100	£0	£1,100	£564	£536
Carbon Management Scheme	£0	£0	£0	£0	£0
Cleaning Contract	£7,600	£0	£7,600	£7,600	£0
Caretaking Contract	£0	£0	£0	£0	£0
Ground Maintenance Contract	£516	£0	£516	£520	-£4
Cleaning Materials	£500	£0	£500	£346	£154
Fire Fighting Equipment	£50	£0	£50	£134	-£84
Rates	£3,530	£0	£3,530	£3,530	£0
<b>SUPPLIES &amp; SERVICES</b>					
Capitation	£7,000	£1,666	£8,666	£5,527	£3,139
Furniture	£65	£0	£65	£0	£65
Postages	£0	£0	£0	£0	£0
Telephone	£250	£0	£250	£78	£172
Area Office	£2,142	£0	£2,142	£2,142	£0
Financial Advice	£438	£0	£438	£438	£0
Banking, Payments, Receipts & Income	£144	£0	£144	£144	£0
SLA Salaries/Wages	£312	£0	£312	£312	£0
SLA Personnel & Salaries/Wages	£397	£1	£397	£397	£0
SLA Catering	£11,404	£0	£11,404	£11,404	£0
SLA Libraries	£60	£0	£60	£60	£0
SLA Archives	£493	£0	£493	£459	£34
Swimming Pools	£350	£0	£350	£776	-£426
Music Service	£1,300	£176	£1,476	£1,745	-£269
SLA - Technology Support	£758	£0	£758	£758	£0
Schools' Networking Services	£3,311	£0	£3,311	£3,311	£0
RESERVE	£0	£21,828	£21,828	£0	£21,828
<b>TOTAL EXPENDITURE</b>	<b>£241,863</b>	<b>£29,186</b>	<b>£271,049</b>	<b>£243,533</b>	<b>£27,516</b>
LETTINGS	£0	£0	£0	£0	£0
DONATIONS / OTHER INCOME	£0	-£1,666	-£1,666	-£1,666	£0
GWE INCOME	£0	-£8,800	-£8,800	-£8,800	£0
USE OF BALANCES	-£8,868	£8,868	£0	£0	£0
GRANTS	-£11,566	-£6,166	-£17,732	-£21,258	£3,526
INTEREST ON BALANCES	£0	£0	£0	-£1,252	£1,252
<b>TOTAL</b>	<b>£221,429</b>	<b>£21,422</b>	<b>£242,851</b>	<b>£210,557</b>	<b>£32,294</b>
CARRYOVER TO FINANCIAL YEAR 2024/2025					£32,294



# Term Dates 2024-2025



## SCHOOL HOLIDAYS 2024-2025

### TERM:

Autumn 2024	2 September 2024	-	20 December 2024
Spring 2025	6 January 2025	-	11 April 2025
Summer 2025	28 April 2025	-	21 July 2025

Pupils will return to school on Tuesday, 3 September, 2024.

### HOLIDAYS:

28 October - 1 November 2024	(Half Term)
23 December 2024 - 3 January 2025	(Christmas Holidays)
24 - 28 February 2025	(Half Term)
14 - 25 April 2025	(Easter Holidays)
5 May 2025	(May Day)
26 - 30 May 2025	(Half Term)
22 July - 29 August 2025	(Summer Holidays)

Schools will re-open for teachers on Monday, 1 September, 2025 and for pupils on Tuesday, 2 September (awaiting confirmation).

Number of days on which schools will be open every month:

SEPTEMBER 2024	21
OCTOBER 2024	19
NOVEMBER 2024	20
DECEMBER 2024	15
JANUARY 2025	20
FEBRUARY 2025	15
MARCH 2025	21
APRIL 2025	12
MAY 2025	16
JUNE 2025	21
JULY 2025	15
	----
	195
	----

2 September 2024 – School Management Day

4 Inset Days

The number of days on which schools will be open to pupils is 190

Schools which close for elections to be held will open for the equivalent number of days at the end of the Summer Term.